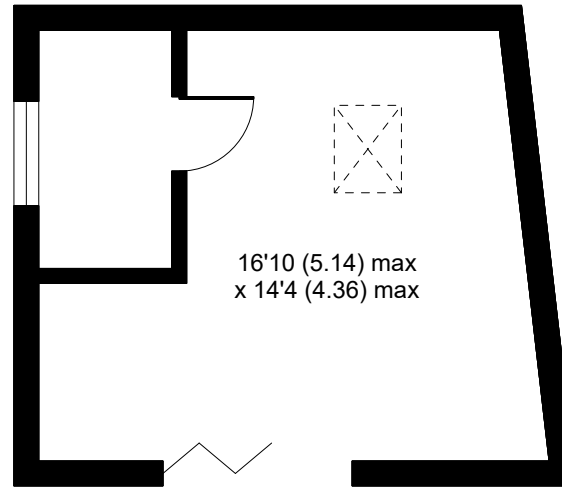
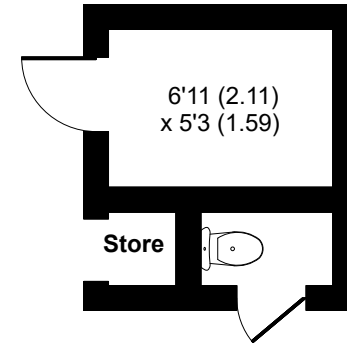


Garden
Approximate
55'1 (16.78)
x 30'8 (9.34)



OUTBUILDING 1

16'10 (5.14) max
x 14'4 (4.36) max



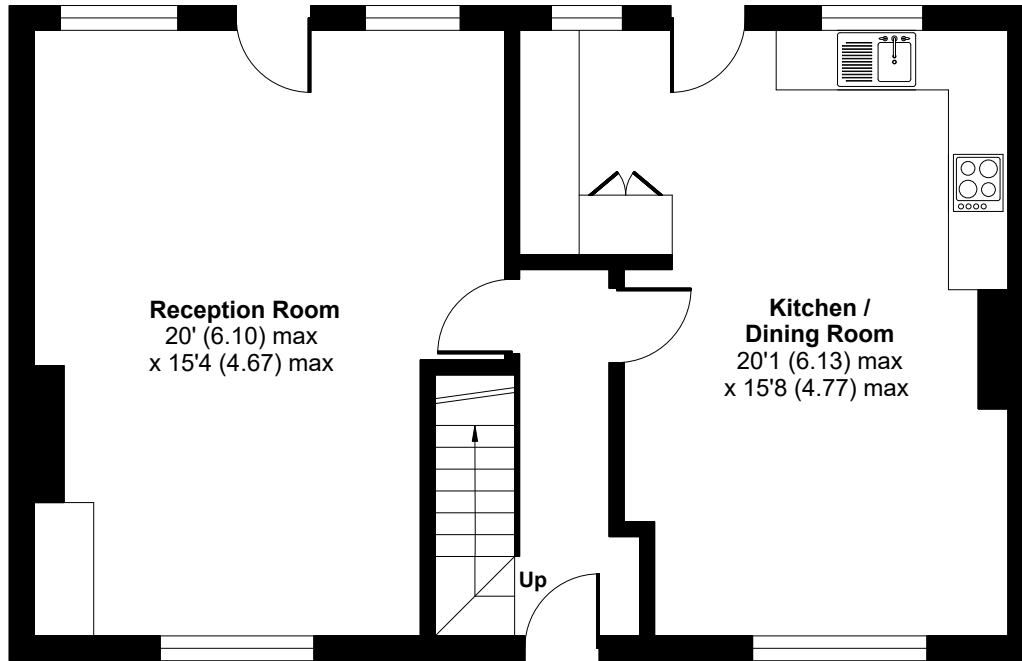
OUTBUILDING 2

Approximate Area = 1288 sq ft / 119.6 sq m

Outbuildings = 283 sq ft / 26.2 sq m

Total = 1571 sq ft / 145.8 sq m

For identification only - Not to scale

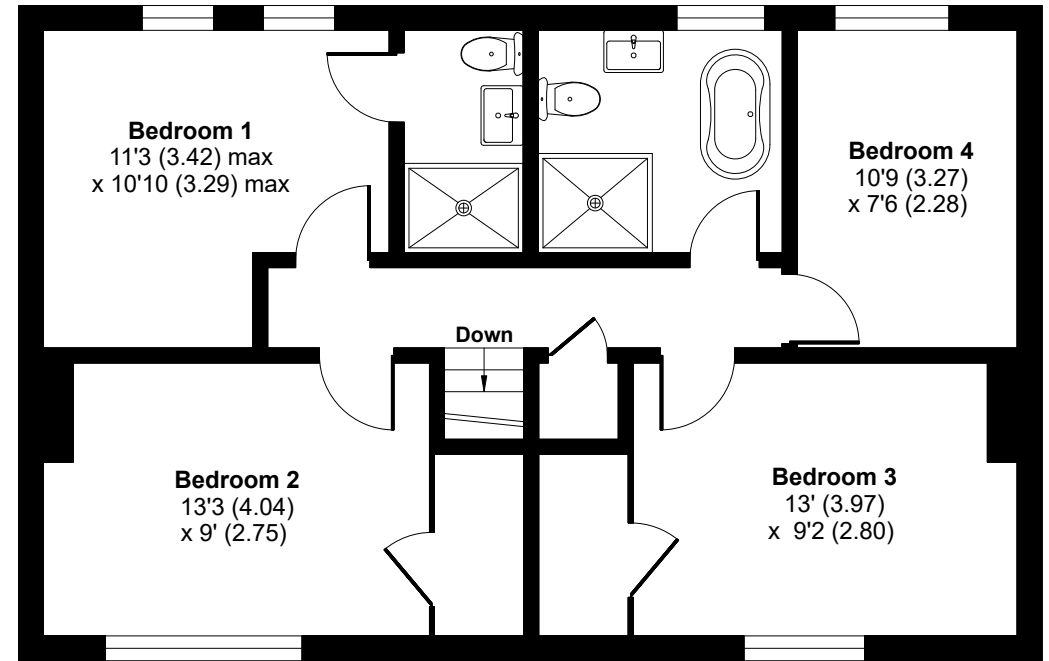


GROUND FLOOR

Reception Room
20' (6.10) max
x 15'4 (4.67) max

**Kitchen /
Dining Room**
20'1 (6.13) max
x 15'8 (4.77) max

Up



FIRST FLOOR

Bedroom 1
11'3 (3.42) max
x 10'10 (3.29) max

Bedroom 4
10'9 (3.27)
x 7'6 (2.28)

Bedroom 2
13'3 (4.04)
x 9' (2.75)

Bedroom 3
13' (3.97)
x 9'2 (2.80)

Down

